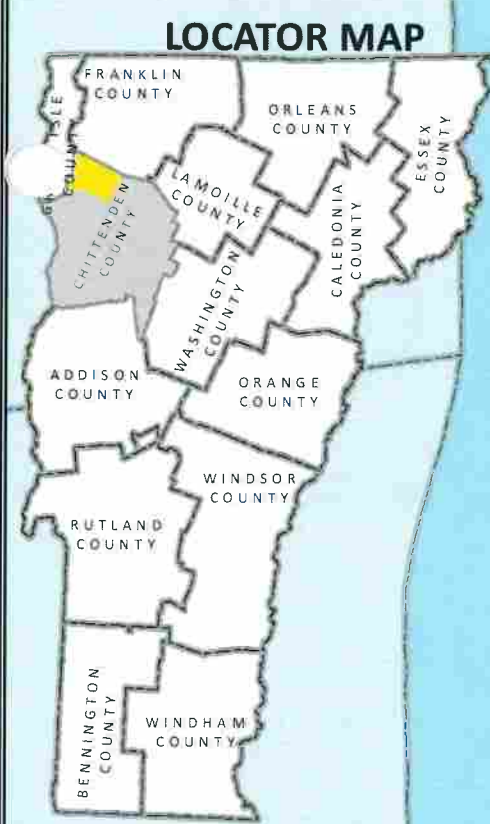
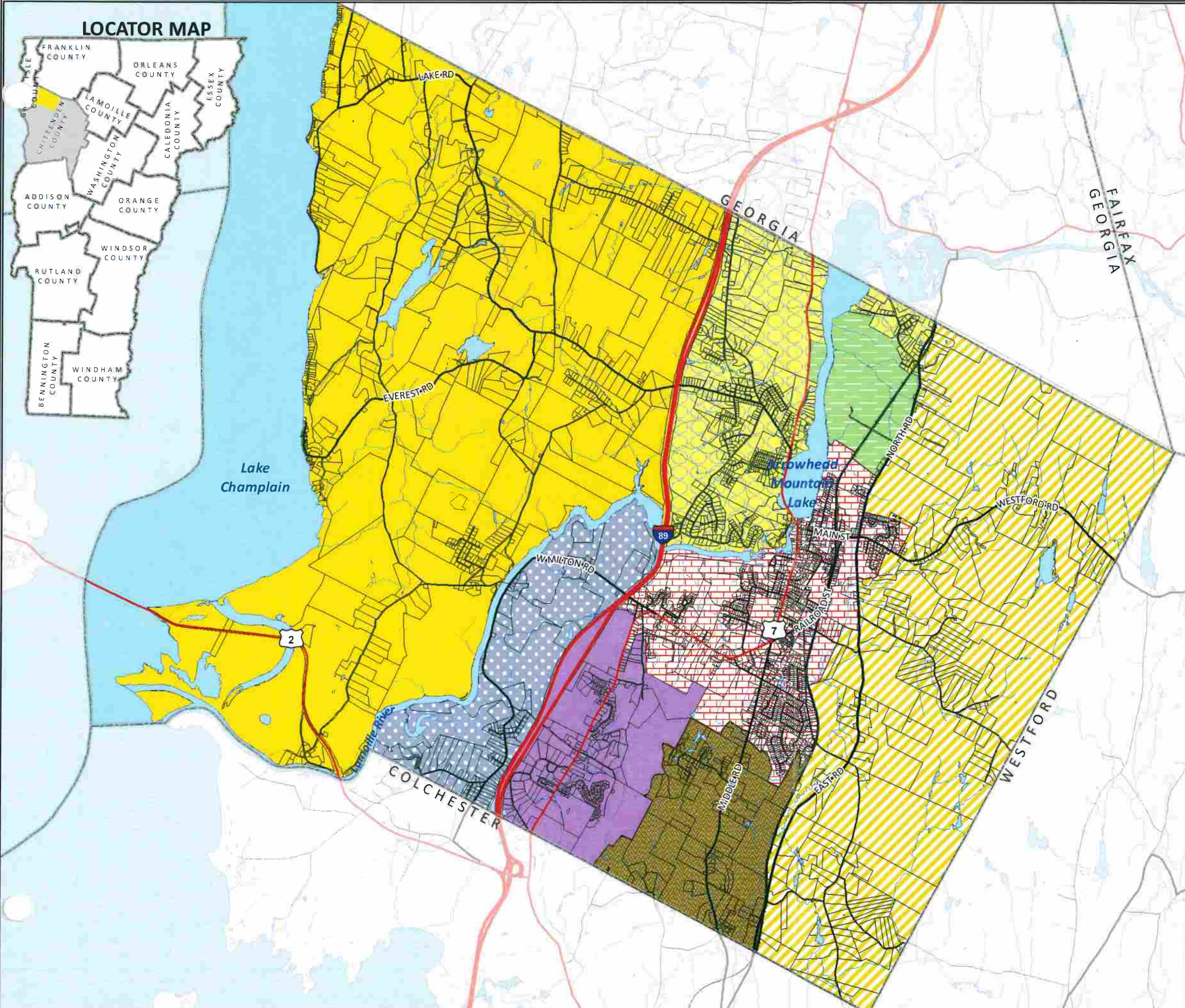


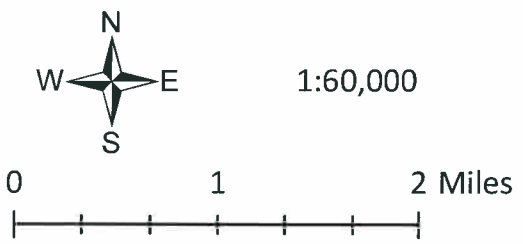
Map 2: Planning Areas Milton, Vermont 2013 Comprehensive Plan



Legend

Planning Areas

-  Arrowhead Lake
-  Catamount
-  Cobble Hill
-  East Milton
-  Lamoille
-  North Road
-  Town Core
-  West Milton
-  Tax Parcel Boundary



Source:
 Planning Areas - CCRPC w/guidance from Milton, 2003
 Road Centerline - CCRPC w/guidance from Milton, 2011 and e911, 8/2012
 Railroad - VTrans, 2003
 Surface Water - VHD, 2008 (VCGI)
 Map created by P. Brangan using ArcGIS. All data is in State Plane Coordinate System, NAD 1983.

Disclaimer:
 The accuracy of information presented is determined by its sources. Errors and omissions may exist. The Chittenden County Regional Planning Commission is not responsible for these. Questions of on-the-ground location can be resolved by site inspections and/or surveys by registered surveyor. This map is not sufficient for delineation of features on-the-ground. This map identifies the presence of features, and may indicate relationships between features, but is not a replacement for surveyed information or engineering studies.