

Trails at **ARROWHEAD** *Golf Course*

Arrowhead Golf Course is not just a golf course. Surrounding the course are forests with miles of trails available for hiking, running, walking, snowshoeing, mountain biking, fat tire biking, cross country skiing AND is pet friendly.

1 Year Pass - \$25 per Household

Welcome Package includes gifts and coupons valued over \$25

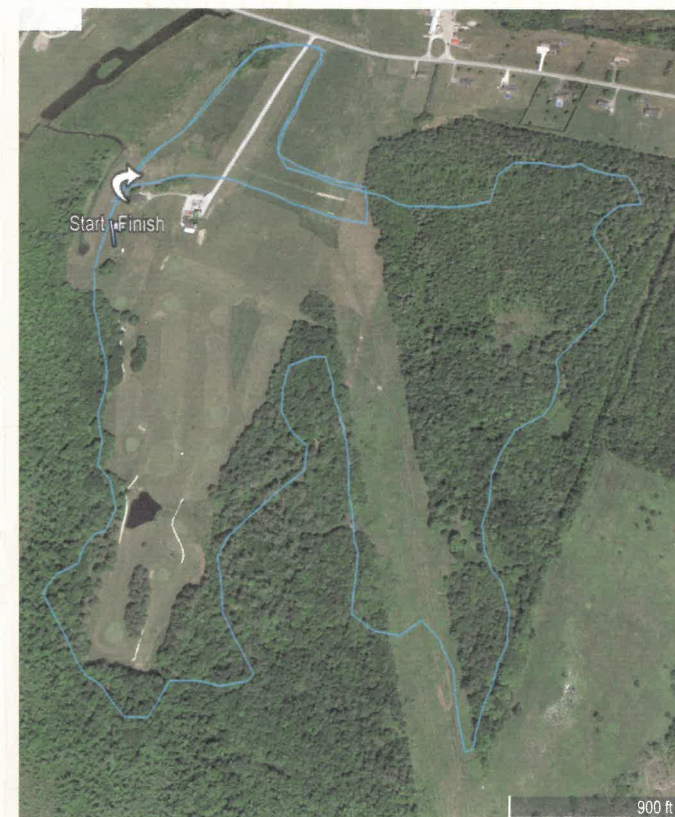
Purchase anytime at our online store - arrowheadvt.com



Trails at Arrowhead Golf Course

*350 Murray Avenue
Milton, Vermont 05468
arrowheadvt.com
802-893-0234*

ne (White)



Trail 1 - White Trail
Trail 2 - Orange Trail
Trail 3 - Blue Trail
Laura's Tears Trail -
Pink Trail

Each Trail is
approximately 5K.



Trail 2 (Orange) has
the least hills.

Laura's Tears Trail
(Pink) is the most
challenging.